

## Renovation of Rotunda II start under Autumn 2019



**The wooden sail ship was purchased under a stormy autumn period in rather neglected status**

A Classical wooden sail ship from 1902. Rebuilt many times over the years with added and changed structures well documented in 2 books covering the history

The initial inspection revealed fair bit of healthy wood structure, some location in bad shape, water ingress via the leaking deck was in practice raining inside, that paired with water just at engine bottom, and 5cm left to watersurface and hole at the right side of the ship, also funky development across the structure, and it was not possible to stay inside for length of time. Ragsock full of white funky was even at the frontal part

Basically it was a dark wet funky hole, a dying ship cold as well and she was on its way down and risk of sinking was there. It was not a suitable location either without electric from land which is always important with wooden boats, there conditions rules and regulations has proofed to hinder renovation and works with much needed electricity of fine old ships. Systems of electrics was in practice disfunc, and complete temp work lights has been done as separate system outside the basic system. **Apparantly hardship to establish a location with electrical supply in order has been a cause of deteriorated conditions a common cause for fine old wood ships which occurs in the Nordics thus in mind many does not want this type of boats or work projects in mind looking ugly and in bad condition, a beauty as she was in former times...**

My other boat Vega 27 fully equiped for live aboard was brought at the location of the ship. That provided possibility to eat, sleep and not move the ship until clarity of the condition was in more depth understood. That also in mind home and office in Kristiansund Norway with work tools there as well.

This boat was the meaning to sell off under springtime 2020, instead it arrived to be a case. The onland storage facility was then securing this fine classical ocean sailer, which whas the plan to spend a month to have this in fine condition.

Instead without prior advance notice, also prior with non correct pressure to remove it despite monthly payments done and declared, forcing hastily saleads to be put via finn.no, and without me to be there, the facility

decides to put it in to the water ,and not declaring first with clock and date, and as of my knowledge without pumps, batterys and bottom plug put in place.

Then it “vanish” from the guest pontoon, and as I understand outright stolen. This manners and utterly irresponsible behaviour is now with police and the insurance. I personally would never do such thing out of management viewpoint . A sad hearth story for such fine Vega 27 which I enjoyed the sailing from Trondheim through the archipelago of Norway down to Stavanger. And the value was not million to motivate such crimes either



The initial slight hardship to not have electric from land, nor proper wc and shower made workload higher to care for own living a issue of concern the first month or so. The first was to drench the deck with diesel and mineraloil mixture as per 1905 istructions found online a couple of times, then finding where is the rott to stop more water ingress.

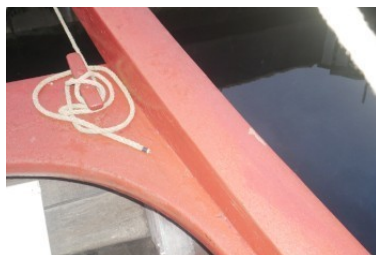
Wood was placed temporarily and removal of rotten wood was applied so to let it dry out, aprox 9 mtr was clearly in much decay status, this as seen on photoalbum 1 .Anothere few meters does exsit at aft behind cabin.

Photo album 1

[woodreplacementlargeone1.pdf](#)

The rudder was stuck and it became obvious that this could be a dangerous issue if movin the rudder violently front and backward with high pressure on the hydraulic cylinders, and creep in inspection revealed upper topper holding plate and pipe has got stuck an rusty and a day on this hammering and oiling got this to loosen up lucky enough.

A oil paint without sanding was brought on the top outside surfaces so to stop ingress and further decay that in mind coming winter for its internal first layer of work.



I have then selected to make the renovation in several stages, same also means repeating the exercise somewhat, due to slight pressure from others surrounding my locations making various threats and statements since spring 2014 kristiansund, which formed the path to make it movable and functional first.

***Make it possible to work at, the ship 3 months***

A. Secure and dry up *Almost done frontal needs additional heater*

B. Light up with ground paint and light and dry up *Almost done frontal needs additional heater*

C. Get functional *Almost done frontal needs additional heater , needs better installations*

---

***Make it possible to work with the ship as office and stay place 3 months***

D. Sand and oilpaint over groundpaints *Arriving jobs*

E. Sanitation and water *Arriving jobs*

F. Electrical base systems *Arriving job*

---

G. Sell of Vega 27 after clean up at drier and warmer month *Arriving jobs*

H. Move Rotunda on land after capital from G. *Arriving jobs*

I. Paint up outside spring summer 2020

J. Mast cleanup and paint

K.

L.

***Make it possible to work with the ship as income educational place to cover the costs***

Dieselsenset serious install *Arriving jobs* Refrigerator install *Arriving jobs*

SeajEEP/30-50hk *Arriving jobs* Liferaft new *Arriving jobs*

Diving gear 9 pers *Arriving jobs* Fishing gear for 9 pers. *Arriving jobs*

Watermaker *Arriving jobs* 5 Solarpanels *Arriving jobs*

1.

A. Stop water ingress and cover surfaces with first layer of paints *Almost done frontal needs additional heater*

B. Check basic functionality of sails, steering and so forth *Almost done ,*

C. Increase heat and warmth and aircirculation onboard **Done add fans**

D. Make a living space for work onboard **Done**

E. Move all equipment from Vega 27 Rotunda to Rotunda II **Done**

F. Turn engine **Done**

G. Load battery's which proofed difficult and near impossible

H. Raise sail and see conditions. **Done**

I. To bring here on land is a quest of selling off Vega27 First so to secure capital for that work

It sort of make sense keeping separate economy from other revenues. Ship and boating is separate economy going hand in hand, the equations is just moving assets and resources from one to another it seldom makes any profit, it covers the cost. Hopefully

2.

A. It arrived a absolute must prior more storms and no land electric as well others shortcircuited the loading procedure of the battery's at a open marina area, that it became a emergency situation to bring here to a better place for more works and assistance was requested, and with the kind help of rs.no they made the small distance possible to a fine secure location with facilities.

Here the Vega 27 was lifted on land and basic cleaning of hull and internal started, the cold rainy weather brought some stopper to futher painting up here inside , in mind heaters and all is now used on Rotunda II While springtime and summer goes for the stay onland for the Vega 27 for a further lift up of ev a deal to sell here off A.

Now started internal works there a first layer of ground paint in stay area, frontcabins, roof, engineerroom

**This to be sanded and painted with thick oilpaint of quality**



Middle is conditions across  
**under the bed and roof as well**, and  
across right is 2 layers ground , and left is  
Groundpaint 3 times , fill in holes  
Oilpaint 1  
**Sanding and 2 layers oilpaint to make**



This is work across entire structure basically a massive undertaking , this is engine room with heating pipe and stove installed prior purchase and battery room, all at purchase point a very dark murky place. **Now substantially lit up and a brighter place to work with.** Many dark wood places as table, bed sides, and doors will be left with its woody structure and varnished.

Basic color scheme that may fit the times, of White, Dark and Light woody brown, Magenta and Dark and Light Grey , hints of black, and clean metals of alumium/silver/copper/bronze of important marine details

Lines of red and green and slight yellowish gold would be there as well engraved probably.  
***Greengreenwhite gets overhauled across for sure I feel especially rectangular areas if so be found***

**AFTER ground color surfaces, to sand and make thick oilpaint**





**BEFORE** surfaces, left under first waisted colors runing down on the surface from above job



*Conditions across was like this inside, simply a disasterzone of magnitude*

*Somewhat a dangerous place as well, thus in mind white /not only funky across*

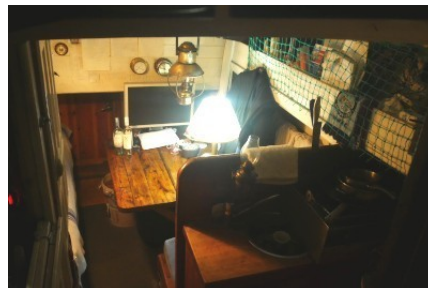
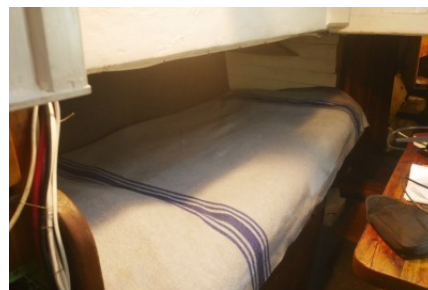
Better loading and lighting was established for the works across the internals, this is outside existing system

C.

All functionality of navigation was established as the threats across the day has been persistent.

D.

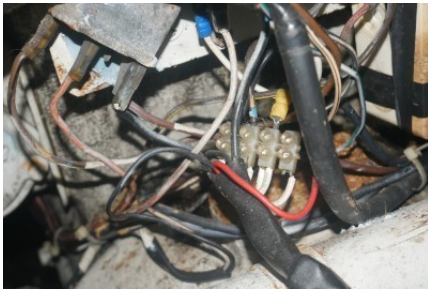
Carpets was also laid as to have a work liveable space, this are easily upgraded as time goes.



Now at winter 2020 having passed Christmas and new year, the lady in some wind is like dancing again... its substantially lighter and drier inside , and basic functions is emergency wise there. It has been full time work since autumn 2020. And plan is 2021 at spring to have here ready.

### Some details of work ahead

Electrical Ignition base systems needs a total overhaul as well 12 Volt lighting there bulbs would be replaced with 12V stronger light version inside brass fixtures.



Fix up and paint up light rudder area, very white fungi area as well



*After no fungi*







This area of deck beam is at critical stage aft left behind main cabin 50% is gone It has not yet been taken out due to wanting to make this wood first

[woodreplacementlargeone1.pdf](#)



#### After

Other minor parts 1 meter or so on each end side of a longbeam across frontal engine room needs deeper checkand control as well

#### **Wood replacement**

Finding some core wood of fair bit quality so at least get the rott which is like soft black earth , to not be rotten taken out and empty oak prices and quests around this area has stayed unanswered so far. So in meantime the pieces are worked with as found with tar and coat paint and bolts of quality form a replacement until oao replacement is there

#### **Picture**

#### **Bathroom and sleep area front after paint**



## **Table left side varnished**

**Nail definition as per earlier done on another ship, this also requires in time attentions and tools and method for replacement across structure is estimated earlier in a smaller boat case.**

**Some has start to loose its head at inside and cover of epoxy color and puttut hopefully could stop oxygen and wetness to further deteriorate the nails, which**

## **Equipment list moved from Rotunda to Rotunda II and installed**

*Most equipment 95% + was purchased in connection to startup School Navigation & Linux server sales in Smøla Outside Kristiansund Norway*

*So far 18000 euro of manhours and 12 000 euro of materials has been added since october 2019.*

Chartplotter Norwegian coast  
Books complete set Imray navigation pilots  
VHF seacom 200  
Handheld VHF  
Epirb  
Stereo complete system  
USB loader  
12v to 220 Converter  
Grill albeit rusty  
Genset 5000 watt  
AIS box not tested functional yet was functional  
2 Fire extinguishers 5 firewarners, 2 buckets and make 9v supply system instead of batteries  
Little rowboat  
Larger anchor  
Gaskitchen in mind old on Rotunda II was faulty is now suddenly the rotundas Gaskicthen also manipulated with if so?it does not change status and function by itself while be away from the boat.  
Sleeping bags and clothing  
A3 color printer and laptop  
Seacharts and navigational tools  
Costume and shoes operational  
Electric heater  
Electric cooker  
220V pump  
Wine production unit  
Compass handheld  
Kicthen plates needs upgrade again frequent disaperance was also in campervan over the years system fault and sick I assume.  
Drone complete No mobile fix that  
Outboard enginee Honda  
Medical kit



Parafin heater  
Axe and knives  
Binocular  
Safety float dress  
Dj lamp and 300 watt stereo and bang lufsen loudspeaker seious sound system  
Diesel and benzin tank  
Marine cable electric & 220 extension cables  
Samsonite suitcase  
Complete toolset and hand tools of all kinds

### **Work list done, not in date order**

Rudder loosened rust at top  
oiled deck twice  
Taken out rott wood in several places  
Moved project to more secure location  
Raised both sails  
Turned engine  
Painted up stay area ground paint  
Moved equipment and installed from Vega 27 Rotunda to Rotunda II  
Added wood around mastfoot , change plastic under still leak  
Added tentcover, which proofed to weak  
Sorted out watch  
Started electric central work functions, to be 12v only  
Gas kitchen work, but manipulations or oddity of concern both kitchens  
Secured outside lighting for renovation 500 watt, to led tech  
Did epsom renovation battery some worked  
Added covers for rottholes at several places  
Woodheat put on across the days to dry here out  
Sorted out insurance and exorbant time to change to correct details and years feel manipulations on here external  
Registration and cards and insurance wanted in English, that was not possible from any party, so must make own. Which seems odd in mind internatioanl organsiations and connections  
Painted up little on doghouse  
Fixed madrasses several more at await  
Sorted out clothes and books, navigational Imray books of importance  
Found anomalitys and likley remote manipulation battery loaders on some  
Fire extinguisher and alarms, pin was removed, batterys need more 9v across or external line  
Added support beams at engineearea after removed total rott  
made temp bookshelf  
Moved outboard to big one  
Emptied water many times substantial dryer now  
Moved battery to deck /loaded installed 2 more to make  
Wood for fire sorted out for heating , no electric heating  
Insurer and registration done, but not moved epirb vhf yet reg due to renovation  
one laptop down again manjaro , get another one again have one  
Fixed 7 person sleep places 3 ok with sleep bags  
Made 12v-5v 220v genset-loader functional need upgrade  
Vhf up and work  
220v pumpup and work  
handpump installed extra have also another aft

Lantern left and right top works aft not , **upgrade to LED**

gangway produced make better wheels and lifting system

### **Depth sounder works needs install**

Radar check and kaputt

painted up frontward area as well some carpet and added worklights

Got chart plotter up and working

Music system works small mp3 with headset and bigger one

Frontal door rusty jammed up , got it functional status, neds still uplift

Door lock fixed

Additional barometer fitted

Defined bottomventil functional rustfrei, handle rusty and off

Sent out request of oak replacement and prices to several firms knowing this trade, not much answers at all.

Painted up engineerom area, tanks, roof, battery area ground paint

Compass outside sanded and painted added 12v electicity and cabling to swtich

Sanded aluminum tank left side

Arranged 500 w worklamp engineerom

Arranged 2 worklamps in frontal part 220V

Painted sidefloor frontal part magenta

Painted groundpaint all 4 cabin areas front

Batterycompartment ground paint white and carpet remake litte

Better sound capability added

Clear paint bed areas frontal

Arranged and fixed bigger loader

Sold outboard

Worked up frontal door better

Defined oak to be repalced and has been rmoved awaiting riska, several contated about ook no answer for weeks

Rudder area painted up

Portable 220V lamp and cable made

4 battery loaded engineerom 12.4-12.6 support loading minimal 14v 2-3 amp across 7 batterys

Found some meters of acceptable wood, one beam needs check for holes,worms for deck housing in non oak cleaning

Upper right cabin carpet some

-----  
Lost substantial time must rebuild website from kajander.advancedfreeweb.com after it was erased and destroyed to kajandercorfu.royalwebhosting.net with some of the food portals fixed,  
-----

### **18/2 2020**

added 12V loading portable in stearing compartent

added design own weatherprof suitcase for seachcharts and books when navig

Cut hole for knee areas to be rounded, **add waterproof leather for chairand fix**

**moved away rope older, put outside and reshape**

added chartplotter in workable status

depthsunder caputt **and fix again?** \cable thickness amp loss?

17/2 2020 got a very small free firewarner by visting firepersons who did odd enough take a picture of lucas electric details

other male stated fireextinghusier is rubbish (one of them), they told they visit all who lives on board

giving free firewarners

added 12v main light main room

Register VHF and Eprib over to Rotunda when insurance has cleared up internal mess, stated system not accept 1904.

Waiting . Testing VHF telco 120 reroute to SE3080 callsign Rotunda II jan kajander and kajandercorfu.royalwebhosting.net

in Stavanger area, put on web after regsitery changes

add another 12 volt bilge pump and another stainless steel pump 50l/min 220

need switch and better cabling and manual swithc + repair pumphouse

### **11/3 2020**

Complete fire and burgular alarm system 7 sensors arranged for

painted up external hull twice ,sanding and repaint to make

2 handpumps and 1 220 Volt , genset 5000 watt works  
 Led work light 2x1.4 watt front installed + more light function like 2x60 watt 220  
 Ledlight 10 watt  
 Cabinet electric for outside aranged for  
 Added better lock front door  
 Added better fishingman style of pro rain gear  
 Sorted out better bicycle  
 Sorted out costume and white shirts  
 Sorted out mp3 music list  
 Painted up 3 doghouses white  
 Added oar holders for little boat  
 Sorted out signage idea at least materialwise  
 Moved the boat to a place free, thus in mind boat association does not want work projects despite iitial ok and agreement  
 Updated laptop linux manjaro , but updates does not fix bios microcode double shadow anomaly at all despite many updates  
 Sorted out by oak /hardwood large rubbish barrel and painted that up  
 Sorted out external lighting fixture, change to led  
 Sorted ot office desk and lighting front led  
 New electric meter added  
 Added 25 meter 40mm rope  
 Sorted out paper and admin for the ship in folder inc history  
 Vega 27 to sale arrived to be issue with boatassociation who put it in the water witout my accept and no time clock date was given and instead of minor renovation it was put in sea wihout batterys , pumps and plug ev unmouned then they lost t!  
 So 2 weeks extra admin , insurer, lawyer and police. Pretty wreckless by the marina./association  
 As of 24/4 2020 14 errors so far from insurers emails , does not look ok so far

**27/3 2020**

due to events around Vega 27 and its forced removal in rather irregular ways , considerable effort and money had to be applied now to secure this fine ship. Eg extra Pumps, lights, electric, loader, ropes,etc and much admin and work 1 month for sure lost due to te events around the Vega 27. The events around corona adds further burden and time in mind governments advice to wash and shower often , while effectivly closing down such facilitys , inc the possibilty to wash clothes ! Aint so clever and in contradiction to the writings and advice somewhat. The facility where the Vega 27 ws stored on land had such facilities in order.But removed



Painted up  
 boms and  
 partially the  
 mast and  
 blocks,  
 waiting on  
 security  
 harness west  
 Main hand  
 held beamlighth  
 sorted out

Serious Battery loader 50 Amp added  
Temp carp floor again under the workperiod  
12V 8A pump added to bilge and connected  
12V 18Amp added , pipe to be done  
2 More 220V pumps added  
Old slings added  
Changed lanterns to Led light to lower amp watt consumption  
Washed main sail first round, kærcher high pressure tested, but it requires 1cm closed and it would take weeks to clean that way, soap and brush did not assist much either  
Masthops replaced with rope and pipe cutted in pieces, the wood masthops was gone  
Mounted lifering and bath ladder  
Started inside paint of deck reling planks

6/4 2020

Front cabin floor painted  
Complete deck painted first layer  
Installed loader and a testrun, ***add cooler fan so heatswitch does not go on***  
Sorted out another fireexiguiser and mounted both  
12V 18A getting installed pipe ok+ breakers for this, change floatswitch  
Gave up paint mast myself , pain left arm and back after events 12/2 2020  
Cleaned many bags of rubbish, guy told he arrange container. No container yet, other guy has car and assist  
Some more blocks painted up  
Insurer still not sorted out Vega 27 which the events started 12/2 2020, need this prior lift up with its associated works so to be sure things functions as supposed to do  
Found brilliant source of gear  
<https://www.classicmarine.co.uk/>  
and Johns maritime links  
Sorted out upgrade course 24 meters

24/4 2020

### Update

**Pictures before & after is [here](#)**

Heavy wood combined heater added to front compartment and its cabin and workplace  
Fogbell brass added  
Steering painted up  
Sorted out 25kg thorn waterplug  
Painted with 800 degree paint the front heater  
Added 500kg winch  
Added larger flag  
Added 12-24 to 19V converter  
Painted front deck another layer  
Added campshower  
Secondary mp3 player  
Old 12V bilgepump restored  
Made 7x lithium batterypack prototype for navigation laptop switchable to avoid converter  
Test satphone failed, retest later  
Double bed 30mm madrass added  
Painted first layer steering place  
added anoher padlock entre  
Added 6-7 20 ltrs 10lts plastic cans for reserv water/diesel and fishnets  
Added cleaning deck gear to renovate  
Ordered Navtex, got a AIS salat netbankcard awating



14/5 2020

**Pictures before & after is [here](#)**

Large solarpanel via finn.no installed 150 watt

Ordered regulator

Fireplace piping rebuild after full winter working it started to have smoke around throughout wall and complete removal cleanup and extending width and around firepipe was applied

Granite stone on top of pipe, changing isolation to fireproof version of rockwool instead of glasfibre

Painted roof with jotun røros, it fades to be 50/50 not full gloss, lifetime of protection is substantial longer then varnish

Liften in monster fireplace heavy

Much admin work around Vega 27 stolen in Lundevåg båtføringStavanger, the admin "amirable" full of repeated loops of the very same thing., tryg, sbr.sr.no, politi so far 60 + messages and is 2-3 sub messages 13-15 pdf files, and still no result on account since events started 12/2 2020.

Added and constructed heavy wood contruction under captains chair so to lift it up, to be covered in leather with ev engraving Added large table for outside and cutting in down I height, benched to be added.

Produced information sign

Upgradig secondary navigation laptop and its ordeals

Adding footslippery steel

---

16/6 2020

Paind up aft deck again

added 12v decklamp led to have something at least, later mast onwire decklamp to be added brass or so

Sorted out another mp3 player

Sorted out 175x175x2700 mm solid wood beams/bottom planks if so

made chartplotter and depthsound portable box and testrun ok

Fixed a spike anchor reserv in mud

Added carpet on floor maincabin better(again)easier to clean

Added 12V , 220 and gas cooler and modified that with a freeze element and pump to shorten startup period it still eats ampere so wood of quality and rockwool isolation around to create better door and cabinet isolation

Mounted decorative promotion jotul plate

Made better metal door for previous thin glas door for jotul heater test run gave fine cool temperature around wall mounting temp sensor and warn bell to be added to suit materials ad time.

Cut metal edge for table edge, gets lukewarm

Added postal box and run testpaint shipoline so to see gloss and color withstand long term UV and wheater without fading fast, this prior major sanding job to start up, wanting to have sanddust and coolor pigment in wood cracks, not sandblast and varnish road due to extreme short lifetime of this sometimes, and especially color theme redmagenta/black/white with green line was choosen to suit the theme of affairs , communication, environment and its much needed uplift as seen on

<http://kajandercorfu.roualwebhosting.net/shiprenovation/woodfix1.pdf>

Starting additional batterypack outside

Price request for boatcarpentry works sent out, to have ideas

Sorted out old wood boat build booksfrom the times the boat was built

Installed wifi parabol (without wifistick yet) have sat sign detector

Fixed manual front bilgeump

Got price antifouling and takeon land job

Defining new place and location of works, thus in mind putting up signage workarea, not put more boats at the signage area

Sortedout new bottom ventils of better quality

Admin vega 27 hopefully gets to its end

Sprayed booze across cabin area to detox the surfaces in mind bugs and lice inc assorted

Applied distance 3 meter moveyourself fast method from following after "guests" that has obvious heavy colds and so forth

Learned in kristansund on my vega 27 to check ladys first for drugs, marriage and pregnancy , which she all fulfilled to my surprise. A kind lady it was, and left she also did, which I had not much onboard for work and more.

Period 19/6-19/7 2020 aprox  
[july2020a.pdf](#)

Period 19/7-19/8 2020  
[aug2020.pdf](#)

Period 19/8-19/9 aprox 2020  
[sept2020jobb1.pdf](#)

Period 19/9 -aprox 19/10 2020  
[oct2020jobb1.pdf](#)

Period 19/10 -aprox 19/11 2020  
[Nov2020.pdf](#)

Period 19/11 -aprox 19/12 2020  
[Dec2020jobb.pdf](#)

### **Rott of everything chapter**

This is Cleared up the vega 27 story

1.

Awaiting insurer results theft of my vega 27 , a lift up jobs to be done after this , and explanation why lawyer profession not pay advance despite 500+ messages and time since 1998 and visits to 13 different legal firms as well 10 or so international law firms contacted (for the overall damage picture since 1998) not 1 single result more then 2 ½ year casehandling time for another boat earlier . This area needs a total overhaul with steelsafes, secure phones, check of no damages brain drugs coco loop, check of control knowledge, and rendezvous functional with its advance payments. Whats outstanding is 0.05% that then forgetting large damages? Its out of order and rather provocative In many ways.And why separate violent behaviour prior stealing my Vega 27. And closing the police report?

2.

At **the very same time** long term ordeal not accepting international health certificate is applied for a drv licence! erased by shiny officer Trondheim ,lost control ?. As well. Nor accepting damage payment for the long years of ordeals. Not answering, Not paying.

<http://www.imo.org/en/OurWork/HumanElement/TrainingCertification/Pages/STCW-Convention.aspx>

<https://www.ics-shipping.org/docs/default-source/ILO-MLC-docs/ilo-imo-guidelines-on-the-medical-examinations-of-seafarers.pdf?sfvrsn=4>

3.

And paired with does not want to send me the UK national insurance number for the time I worked as dak/Cad manager there..a 5000 euro salary levels. Taxoffice uk Not want to answer or send it to police of Norway for collection. Is that evidence of “not accept edu and contactprofile so to lower damagecase?”

<http://kajandercorfu.royalwebhosting.net/arbete/work.pdf>

**Onwards worklist towards 2021 Springtime  
Outside work is at spring time mars-June**

**Always nice to create something that could bring food on the table to share with as sweet lady or other loved ones...this from inside.**



**Materials and works spent is at aprox 300 000:- currently there materials is at 120 000:- and rest is at cleaners salary level for 7 months. Aprox the 300 000:- more is in need.**

### **Worklist after website restore again**

Onland hull paint, and works related to this. Now delayed due to insurance story Vega 27, see above

Paint up outside hull done , 2 more and sanding to do

Replace removed wood

Bottom paint and ev replacements

Sand deck and replace wood in places found

Replace aft beam deck behind kitchen

Install depth sounder

Convert 220/12v mix system to be only 12V across , test runs solarpanel , add another

Dieselgenset install/find

Lights deck install

Sand propulsion system and paint

Paint up enginee

Climb mast and paint

All blocks oil

Anchor paint

Add liferaft

Toolchest/ area to work out, front

Small boat arrange with enginee 35-45hk?liftable onboard

Small 12v electric fans for more circulations between inner and outer hull.

Add 5 solar panels aft

Install refrigerator

Install shower

Check watertank manhole clean inside if need

Check change diesel clean and paint tank

Lanterns change to LED and stronger

rusty ketting paint and dry up

Dishwater/freshwater system fix

Rope across drench in something and test inspect

Blocks oil and inspect

Add better battery cabling and shoes and a switch

Mast climb and fix lines and paint up seal crack inspect  
Either mastcrane more secure or add steps in mast system?check online  
Remove sails and wash  
Ceramic paste jotul fix  
Add watermaker  
Newmasthops by wood  
Epoxy deck  
Steelplates rudder fix  
little boat paint up  
Add dieselgenset 6-9000 watt water cooled  
Sand all brassfixtures  
Paint up bath ladder

### **Minor issues of concern:**

**After first phase as described above, which was get it movable, and workable following plan is there**

Add better 12V pump  
SeajEEP add its aprox 3-5000 euro  
Wash sails  
wire 9V fire other alarm system  
Add 5 more fireextinguishers  
Add another solar panels

### **Current**

**Some history: More to come**

[jekt1.pdf](#)

[jekt2.pdf](#)