

Renovation of Rotunda II start under Autum 2019



The wooden sail ship was purchased under a stormy autumn period in rather neglected status

A Classical wooden sail ship from 1902. Rebuilt many times over the years with added and changed structures well documented in 2 books covering the history

The initial inspection revealed fair bit of healthy wood structure, some location in bad shape, water ingress via the leaking deck was in practice raining inside, that paired with water just at engine bottom, and 5cm left to watersurface and hole at the right side of the ship , also funky development across the structure , and it was not possible to stay inside for length of time. Ragsock full of white funky was even at the frontal part

Basically it was a dark wet funky hole, a dying ship cold as well and she was on its way down and risk of sinking was there. It was not a suitable location either without electric from land which is always important with wooden boats, there conditions rules and regulations has proofed to hinder renovation and works with much needed electricity of fine old ships. Systems of electrics was in practice disfunc, and complete temp work lights has been done as separete system outside the basic system. **Apparantly hardship to establish a location with electrical supply in order has been a cause of detoriated conditions a common cause for fine old wood ships which occurs in the Nordics thus in mind many does not want this type of boats or work projects in mind looking ugly and in bad condition, a beauty as she was in former times...**

My other boat Vega 27 fully equiped for live aboard was brought at the location of the ship. That provided possibility to eat, sleep and not move the ship until clarity of the condition was in more depth understood. That also in mind home and office in Kristiansund Norway with work tools there as well.

This boat was the meaning to sell off under springtime 2020, instead it arrived to be a case. The onland storage facility was then securing this fine classical ocean sailer, which whas the plan to spend a month to have this in fine condition.

Instead without prior advance notice , also prior with non correct pressure to remove it despite monthly payments done and declared, forcing hastily saleads to be put via finn.no ,and without me to be there, the facility decides to put it in to the water ,and not declaring first with clock and date, and as of my knowledge without pumps, batterys and bottom plug put in place.

Then it “vanish” from the guest pontoon, and as I understand outright stolen. This manners and utterly irresponsible behaviour is now with police and the insurance. I personally would never do such thing out of management viewpoint . A sad hearth story for such fine Vega 27 which I enjoyed the sailing from Trondheim through the archipelago of Norway down to Stavanger. And the value was not million to motivate such crimes either



The initial slight hardship to not have electric from land, nor proper wc and shower made workload higher to care for own living a issue of concern the first month or so. The first was to drench the deck with diesel and mineraloil mixture as per 1905 istructions found online a couple of times, then finding where is the rott to stop more water ingress.

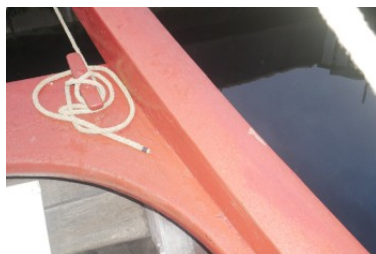
Wood was placed temporarily and removal of rotten wood was applied so to let it dry out, aprox 9 mtr was clearly in much decay status, this as seen on photoalbum 1 .Anothere few meters does exsist at aft behind cabin.

Photo album 1

[woodreplacementlargeone1.pdf](#)

The rudder was stuck and it became obvious that this could be a dangerous issue if movin the rudder violently front and backward with high pressure on the hydraulic cylinders, and creep in inspection revealed upper topper holding plate and pipe has got stuck an rusty and a day on this hammering and oiling got this to loosen up lucky enough.

A oil paint without sanding was brought on the top outside surfaces so to stop ingress and further decay that in mind coming winter for its internal first layer of work.



I have then selected to make the renovation in several stages, same also means repeating the exercise somewhat, due to slight pressure from others surrounding my locations making various threats and statements since spring 2014 kristiansund, which formed the path to make it movable and functional first.
Make it possible to work at, the ship 3 months

A. Secure and dry up *Almost done frontal needs additional heater*

B. Light up with ground paint and light and dry up *Almost done frontal needs additional heater*

C. Get functional *Almost done frontal needs additional heater , needs better installations*

Make it possible to work with the ship as office and stay place 3 months

D. Sand and oilpaint over groundpaints *Arriving jobs*

E. Sanitation and water *Arriving jobs*

F. Electrical base systems *Arriving job*

G. Sell of Vega 27 after clean up at drier and warmer month *Arriving jobs*

H. Move Rotunda on land after capital from G. *Arriving jobs*

I. Paint up outside spring summer 2020

J. Mast cleanup and paint

K.

L.

Make it possible to work with the ship as income educational place to cover the costs

Diesलगenset serious install *Arriving jobs* **Refrigator install** *Arriving jobs*

Seajep/30-50hk *Arriving jobs* **Liferaft new** *Arriving jobs*

Diving gear 9 pers *Arriving jobs* **Fishing gear for 9 pers.** *Arriving jobs*

Watermaker *Arriving jobs* **5 Solarpanels** *Arriving jobs*

1.

A. Stop water ingress and cover surfaces with first layer of paints *Almost done frontal needs additional heater*

B. Check basic functionality of sails, steering and so forth *Almost done ,*

C. Increase heat and warmth and aircirculation onboard **Done add fans**

D. Make a living space for work onboard **Done**

E. Move all equipment from Vega 27 Rotunda to Rotunda II **Done**

F. Turn enginee **Done**

G. Load battery's which proofed difficult and near impossible

H. Raise sail and see conditions. **Done**

I. To bring here on land is a quest of selling off Vega27 First so to secure capital for that work

It sort of make sense keeping separate economy from other revenues. Ship and boating is separate economy going hand in hand, the equations is just moving assets and resources from one to another it selldom makes any profit, it covers the cost. Hopefully

2.

A. It arrived a absolute must prior more storms and no land electric as well others shortcircuited the loading procedure of the battery's at a open marina area, that it became a emergency situation to bring here to a better place for more works and assistance was requested, and with the kind help of rs.no they made the small distance possible to a fine secure location with facilities.

Here the Vega 27 was lifted on land and basic cleaning of hull and internal started, the cold rainy weather brought some stopper to futher painting up here inside , in mind heaters and all is now used on Rotunda II While springtime and summer goes for the stay onland for the Vega 27 for a further lift up of ev a deal to sell here off A.

Now started internal works there a first layer of ground paint in stay area, frontcabins, roof, engineeroom

This to be sanded and painted with thick oilpaint of quality



Middle is conditions across
under the bed and roof as well, and
 across right is 2 layers ground , and left is
 Groundpaint 3 times , fill in holes
 Oilpaint 1
Sanding and 2 layers oilpaint to make



This is work across entire structure basically a massive undertaking , this is engine room with heating pipe and stove installed prior purchase and battery room, all at purchase point a very dark murky place. **Now substantially lit up and a brighter place to work with.** Many dark wood places as table, bed sides, and doors will be left with its woody structure and varnished.

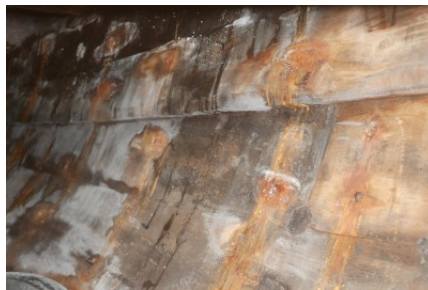
Basic color scheme that may fit the times, of White, Dark and Light woody brown, Magenta and Dark and Light Grey , hints of black, and clean metals of alumium/silver/copper/bronze of important marine details

Lines of red and green and slight yellowish gold would be there as well engraved probably.
Greygreenwhite gets overhauled across for sure I feel especially rectangular areas if so be found

AFTER ground color surfaces, to sand and make thick oilpaint



BEFORE surfaces, left under first waisted colors runing down on the surface from above job





Conditions across was like this inside, simply a disasterzone of magnitude

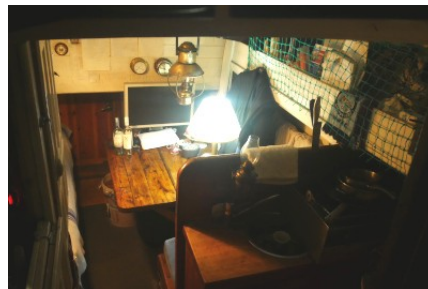
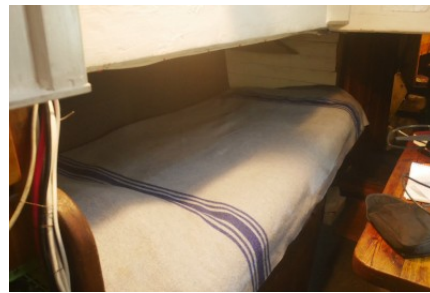
Somewhat a dangerous place as well, thus in mind white /not only funky across

Better loading and lighting was established for the works across the internals, this is outside existing system C.

All functionality of navigation was established as the threats across the day has been persistent.

D.

Carpets was also laid as to have a work liveable space, this are easily upgraded as time goes.



Now at winter 2020 having passed Christmas and new year, the lady in some wind is like dancing again... its substantially lighter and drier inside , and basic functions is emergency wise there. It has been full time work since autumn 2020. And plan is 2021 at spring to have here ready.

Some details of work ahead

Electrical Ignition base systems needs a total overhaul as well 12 Volt lighting there bulbs would be replaced with 12V stronger light version inside brass fixtures.



Fix up and paint up light rudder area, very white funky area as well



After no fungi





This area of deck beam is at critical stage aft left behind main cabin 50% is gone It has not yet been taken out due to wanting to make this wood first

[woodreplacementlargeone1.pdf](#)



After

Other minor parts 1 meter or so on each end side of a longbeam across frontal enginee room needs deeper check and control as well

Wood replacement

Finding some core wood of fair bit quality so at least get the rott which is like soft black earth , to not be rotten taken out and empty oak prices and quests around this area has stayed unanswered so far. So in meantime the pieces are worked with as found with tar and coat paint and bolts of quality form a replacement until oao replacement is there

Picture



Bathroom and sleep area front after paint



Table left side varnished

Nail definition as per earlier done on another ship, this also requires in time attentions and tools and method for replacement across structure is estimated earlier in a smaller boat case.

Some has start to loose its head at inside and cover of epoxy color and puttut hopefully could stop oxygen and wetness to further deteriorate the nails, which

Equipment list moved from Rotunda to Rotunda II and installed

Most equipment 95% + was purchased in connection to startup School Navigation & Linux server sales in Smøla Outside Kristiansund Norway

So far 18000 euro of manhours and 12 000 euro of materials has been added since october 2019.

Chartplotter Norwegian coast
Books complete set Imray navigation pilots
VHF seacom 200
Handheld VHF
Epirb
Stereo complete system
USB loader
12v to 220 Converter
Grill albeit rusty
Genset 5000 watt
AIS box not tested functional yet was functional
2 Fire extinguishers 5 firewarners, 2 buckets and make 9v supply system instead of batteries
Little rowboat
Larger anchor
Gaskitchen in mind old on Rotunda II was faulty is now suddenly the rotundas Gaskitchen also manipulated with if so?it does not change status and function by itself while be away from the boat.
Sleeping bags and clothing
A3 color printer and laptop
Seacharts and navigational tools
Costume and shoes operational
Electric heater

Electric cooker
220V pump
Wine production unit
Compass handheld
Kitchen plates needs upgrade again frequent disappearance was also in campervan over the years
system fault and sick I assume.
Drone complete No mobile fix that
Outboard engine Honda
Medical kit
Paraffin heater
Axe and knives
Binocular
Safety float dress
DJ lamp and 300 watt stereo and bang lufsen loudspeaker serious sound system
Diesel and petrol tank
Marine cable electric & 220 extension cables
Samsonite suitcase
Complete toolset and hand tools of all kinds

Work list done, not in date order

Rudder loosened rust at top
oiled deck twice
Taken out rott wood in several places
Moved project to more secure location
Raised both sails
Turned engine
Painted up stay area ground paint
Moved equipment and installed from Vega 27 Rotunda to Rotunda II
Added wood around mastfoot, change plastic under still leak
Added tentcover, which proved to weak
Sorted out watch
Started electric central work functions, to be 12v only
Gas kitchen work, but manipulations or oddity of concern both kitchens
Secured outside lighting for renovation 500 watt, to led tech
Did epsom renovation battery some worked
Added covers for rottholes at several places
Woodheat put on across the days to dry here out
Sorted out insurance and exorbitant time to change to correct details and years feel manipulations on here external
Registration and cards and insurance wanted in English, that was not possible from any party, so must make own. Which
seems odd in mind international organisations and connections
Painted up little on doghouse
Fixed mattresses several more at await
Sorted out clothes and books, navigational Imray books of importance
Found anomalies and likely remote manipulation battery loaders on some
Fire extinguisher and alarms, pin was removed, batteries need more 9v across or external line
Added support beams at engine area after removed total rott
made temp bookshelf
Moved outboard to big one
Emptied water many times substantial dryer now

Moved battery to deck /loaded installed 2 more to make
Wood for fire sorted out for heating , no electric heating
Insurer and registration done, but not moved epirb vhf yet reg due to renovation
one laptop down again manjaro , get another one again have one
Fixed 7 person sleep places 3 ok with sleep bags
Made 12v-5v 220v genset-loader functional need upgrade
Vhf up and work
220v pumpup and work
handpump installed extra have also another aft
Lantern left and right top works aft not , **upgrade to LED**
gangway produced make better wheels and lifting system
Depth sounder works needs install
Radar check and kaputt
painted up frontward area as well some carpet and addedworklights
Got chart plotter up and working
Music system works small mp3 with headset and bigger one
Frontal door rusty jammed up , got it functional status, neds still uplift
Door lock fixed
Additional barometer fitted
Defined bottomventil functional rustfrei, handle rusty and off
Sent out request of oak replacement and prices to several firms knowing this trade, not much answers at all.
Painted up engineerom area, tanks, roof, battery area ground paint
Compass outside sanded and painted added 12v electricty and cabling to swtich
Sanded aluminum tank left side
Arranged 500 w worklamp engineerroom
Arranged 2 worklamps in frontal part 220V
Painted sidefloor frontal part magenta
Painted groundpaint all 4 cabin areas front
Batterycompartment ground paint white and carpet remake litte
Better sound capability added
Clear paint bed areas frontal
Arranged and fixed bigger loader
Sold outboard

Worked up frontal door better
Defined oak to be repalced and has been rmoved awaiting riska, several contated about ook no answer for weeks
Rudder area painted up
Portable 220V lamp and cable made
4 battery loaded engineerroom 12.4-12.6 support loading minimal 14v 2-3 amp across 7 batterys
Found some meters of acceptable wood, one beam needs check for holes,worms for deck housing in non oak cleaning
Upper right cabin carpet some

Lost substantial time must rebuild website from kajander.advancedfreeweb.com after it was erased and destroyed to
kajandercorfu.royalwebhosting.net with some of the food portals fixed,

18/2 2020

added 12V loading portable in steering compartent
added design own weatherprof suitcase for seachcharts and books when navig
Cut hole for knee areas to be rounded, **add waterproof leather for chairand fix**
moved away rope older, put outside and reshape
added chartplotter in workable status
depthsounder caputt **and fix again?cable thickness amp loss?**
17/2 2020 got a very small free firewarner by visting firepersons who did odd enough take a picture of lucas electric details
other male stated fireextinghusier is rubbish (one of them), they told they visit all who lives on board
giving free firewarners
added 12v main light main room

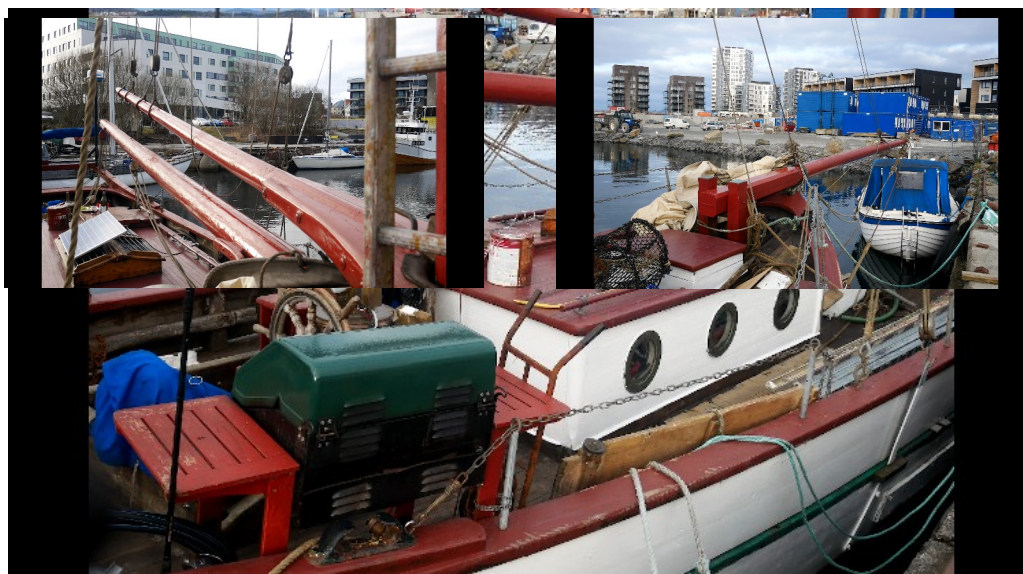
Register VHF and Eprib over to Rotunda when insurance has cleared up internal mess, stated system not accept 1904.
Waiting . Testing VHF telco 120 reroute to SE3080 callsign Rotunda II jan kajander and kajandercorfu.royalwebhosting.net
in Stavanger area, put on web after registry changes
add another 12 volt bilge pump and another stainless steel pump 50l/min 220
need switch and better cabling and manual switch + repair pumphouse

11/3 2020

Complete fire and burglar alarm system 7 sensors arranged for
painted up external hull twice ,sanding and repaint to make
2 handpumps and 1 220 Volt , genset 5000 watt works
Led work light 2x1.4 watt front installed + more light function like 2x60 watt 220
Ledlight 10 watt
Cabinet electric for outside arranged for
Added better lock front door
Added better fishingman style of pro rain gear
Sorted out better bicycle
Sorted out costume and white shirts
Sorted out mp3 music list
Painted up 3 doghouses white
Added oar holders for little boat
Sorted out signage idea at least materialwise
Moved the boat to a place free, thus in mind boat association does not want work projects despite initial ok and agreement
Updated laptop linux manjaro , but updates does not fix bios microcode double shadow anomaly at all despite many updates
Sorted out by oak /hardwood large rubbish barrel and painted that up
Sorted out external lighting fixture, change to led
Sorted out office desk and lighting front led
New electric meter added
Added 25 meter 40mm rope
Sorted out paper and admin for the ship in folder inc history
Vega 27 to sale arrived to be issue with boatassociation who put it in the water without my accept and no time clock date was given and instead of minor renovation it was put in sea without batteries , pumps and plug even unmounted then they lost it!
So 2 weeks extra admin , insurer, lawyer and police. Pretty wreckless by the marina./association
As of 24/4 2020 14 errors so far from insurers emails , does not look ok so far

27/3 2020

due to events around Vega 27 and its forced removal in rather irregular ways , considerable effort and money had to be applied now to secure this fine ship. Eg extra Pumps, lights, electric, loader, ropes,etc and much admin and work 1 month for sure lost due to the events around the Vega 27. The events around corona adds further burden and time in mind governments advice to wash and shower often , while effectively closing down such facilities , inc the possibility to wash clothes ! Aint so clever and in contradiction to the writings and advice somewhat. The facility where the Vega 27 was stored on land had such facilities in order. But removed



Painted up boms and partially the mast and blocks, waiting on security harness west
Main hand held beamlight sorted out
Serious Battery loader 50 Amp added
Temp carp floor again under the workperiod
12V 8A pump added to bilge and connected
12V 18Amp added , pipe to be done
2 More 220V pumps added
Old slings added
Changed lanterns to Led light to lower amp watt consumption
Washed main sail first round, kærcher high pressure tested, but it requires 1cm closed
and it would take weeks to clean that way, soap and brush did not assist much either
Masthops replaced with rope and pipe cutted in pieces, the wood masthops was gone
Mounted lifering and bath ladder
Started inside paint of deck reling planks

6/4 2020

Front cabin floor painted
Complete deck painted first layer
Installed loader and a testrun, ***add cooler fan so heatswitch does not go on***
Sorted out another fireexiguiser and mounted both
12V 18A getting installed pipe ok+ breakers for this, change floatswitch
Gave up paint mast myself , pain left arm and back after events 12/2 2020
Cleaned many bags of rubbish, guy told he arrange container. No container yet, other guy has car and assist
Some more blocks painted up
Insurer still not sorted out Vega 27 which the events started 12/2 2020, need this prior lift up with its associated works so to
be sure things functions as supposed to do
Found brilliant source of gear
<https://www.classicmarine.co.uk/>
and Johns maritime links
Sorted out upgrade course 24 meters

24/4 2020

Update

Heavy wood combined heater added to front compartment and its cabin and workplace
Fogbell added
Steering painted up
Sorted out 25kg thorn waterplug
Painted with 800 degree paint the front heater
Added 500kg winch
Added larger flag
Added 12-24 to 19V converter
Painted front deck another layer
Added campshower
Secondary mp3 player
Old 12V bilgepump restored
Made 7x lithium batterypack prototype for navigation laptop switchable to avoid converter
Test satphone failed, retest later
Double bed 30mm madrass added
Painted first layer steering place
added anoher padlock entre
Added 6-7 20 ltrs 10lts plastic cans for reserv water/diesel and fishnets
Added cleaning deck gear to renovate
Ordered Navtex, got a AIS salat netbankcard awating

**Onwards worklist towards 2021 Springtime
Outside work is at spring time mars-June**

Always nice to create something that could bring food on the table to share with as sweet lady or other loved ones...this from inside.



Materials and works spent is at aprox 300 000:- currently there materials is at 120 000:- and rest is at cleaners salary level for 7 months. Aprox the 300 000:- more is in need.

Worklist after website restore again

Onland hull paint, and works related to this. Now delayed due to insurance story Vega 27, see above
Paint up outside hull done , 2 more and sanding to do
Replace removed wood
Bottom paint and ev replacements
Sand deck and replace wood in places found
Replace aft beam deck behind kitchen
Install depth sounder
Convert 220/12v mix system to be only 12V across , test runs solarpanel , add another
Dieselgenset install/find
Lights deck install
Sand propulsion system and paint
Paint up enginee
Climb mast and paint
All blocks oil
Anchor paint
Add liferaft
Toolchest/ area to work out, front
Small boat arrange with enginee 35-45hk?liftable onboard
Small 12v electric fans for more circulations between inner and outer hull.
Add 5 solar panels aft

Install refrigerator
Install shower
Check watertank manhole clean inside if need
Check change diesel clean and paint tank
Lanterns change to LED and stronger
rusty ketting paint and dry up
Dishwater/freshwater system fix
Rope across drench in something and test inspect
Blocks oil and inspect
Add better battery cabling and shoes and a switch
Mast climb and fix lines and paint up seal crack inspect
Either mastcrane more secure or add steps in mast system?check online
Remove sails and wash
Ceramic paste jotul fix
Add watermaker
Newmasthops by wood
Epoxy deck
Steelplates rudder fix
little boat paint up
Add dieselgenset 6-9000 watt water cooled
Sand all brassfixtures
Paint up bath ladder

Minor issues of concern:

After first phase as described above, which was get it movable, and workable following plan is there

Add better 12V pump
Seajep add its aprox 3-5000 euro
Wash sails
wire 9V fire other alarm system
Add 5 more fireextinguishers
Add another solar panels

Current